

A gas cooker fault can be small until you live with the consequences. One week it is "simply" an ignition that maintains clicking, the subsequent it's a burner with a purpose to no longer hold a solid flame, and abruptly you are smelling fuel in case you lift the lid. I have observed tons of callouts wherein the factual complication was once not the cooker in any respect, it became a replaced fuel source, a mis-gear up burner cap, or any person cleansing in a means that quietly blocked the tiny ports round the flame head.

This instruction manual is written from the sensible side of fuel paintings, the bits you're able to payment properly, and the bits you needs to on no account improvise. Whether your cooker is LPG or attached to herbal fuel, the principles are the same: combustion necessities the excellent blend of gas and air, ignition needs refreshing, dry contacts and best suited electrode positioning, and leaks may want to be handled like an emergency each time.

First: treat fuel like gas, no longer like "perchance"

If you ever have a suspected leak, do not "try out" it with a flame. Do not save flicking the knobs to peer what takes place. Gas home equipment are designed to burn in a managed approach, but a leak escapes that regulate.

I inform spouse and children clientele to exploit a functional rule: if you smell fuel, you act first and troubleshoot later. Ventilation matters, and so does shutting off offer. Even if the odor turns out to be whatever thing else, the value of taking reasonable steps early is tiny when put next with the menace of delay.

If you usually are not trained to use fuel detection resources, the most secure movement is to call a local Gas Fire Service or Gas Cooker Installation expert, or a Gas Safety Check engineer who quite often works on LPG and usual gasoline home equipment.

Common signs and symptoms and what they constantly mean

Gas cooker faults occasionally cluster into three subject matters, ignition, flame overall performance, and leaks. Each one features to a small set of reasons.

Ignition problems: clicks, no flame, or susceptible sparks

When the ignition fails, other people routinely hear quick clicking from the electrode and imagine the spark is the issue. It is perhaps, yet ignition disorders also come from rainy burner parts, misalignment, corrosion, or an electrode that has slipped or cracked.

A time-honored situation I actually have treated looks like this: the cooker labored the day prior to this, lately most effective one hob ignites reliably. The user lately cleaned the burners, might be soaking them in soapy water. When the whole lot dries, the ignition nonetheless fails, which tells you moisture can sit within the burner head or across the electrode. Sometimes the burner cap is equipped a little bit off-centre, blocking off the fuel trail so the spark reaches air as opposed to igniting gasoline.

Then there are the circumstances where the clicking will become weaker, or the spark jumps irregularly. That is usually all the way down to electrode put on, dirty top rigidity leads, or a vigour deliver quandary. Most smooth cookers nonetheless depend on a few sort of electrical feed for ignition, although the flame is solely fuel.

Flame subject matters: lifting, yellow hints, or one burner that gained't reside lit

Flame troubles are combustion similar. A healthy flame is ordinarily blue with a reliable internal middle and a steady structure. If it lifts, glints excessively, or turns pretty yellow, the gas-air combine is off.

On cookers, flame form transformations almost always with blocked burner ports, flawed burner cap placement, partial restrictions inside the fuel inlet or regulator direction, or air supply troubles relying at the cooker design. In families in which an LPG cylinder has these days been swapped, it might probably additionally be associated to regulator output and force steadiness. LPG faults can masquerade as "a dirty burner", because the burner ports warfare while the source drive or float seriously isn't what the burner expects.

One element that things: some burners are designed to carry out otherwise at completely different settings. If a burner lighting adequately on prime yet struggles on low, which could aspect to a blocked orifice, a valve seating dilemma, or air mix adjustment themes.

Leaks: odor, hissing, or odd burner behavior

Leaks can convey up as a power scent close the cooker, a hissing sound when gasoline is on, or symptoms like delayed ignition given that gas shouldn't be igniting cleanly on the good time. However, not on time ignition may also be "overall" if the burner is in part blocked or the person assists in keeping the knob too short. The protected means to tell apart is with applicable assessments, now not guesswork.

In a factual callout, I once came upon that a bendy connector had been wired in the course of cleansing, leaving a tiny leak that in simple terms launched gasoline while the cooker was moved slightly. The home owner had been turning knobs as component of troubleshooting, which meant the "issue" changed at the same time we have been gazing it. That is yet one more intent to quit and isolate delivery when you suspect a leak.

Safety steps you can take in the past all of us touches a valve

If you are optimistic you can do common checks with out dismantling gas elements past what the company expects, you're able to more often than not repair normal functionality. The goal isn't very to "restoration" a gas fault your self. The goal is to eliminate typical, reversible explanations like incorrect reassembly and blocked burner constituents.

Here is a short, life like listing that remains on the dependable facet.

- Turn off the gasoline grant on the isolation valve.
- Let the cooker cool permanently, then do away with burner caps and heads.
- Dry the entirety correctly, along with any electrode vicinity you are able to see.
- Check that every burner cap sits thoroughly and centrally on its head.
- If you smell gas to come back, stop and contact for a Gas Safety Check.

Most ignition and flame faults that I see inside the container are resolved by way of most excellent reassembly and relevant drying. It is absolutely not glamorous, however it's miles real.

Ignition repair: the bits that in reality move wrong

The ignition machine on a gasoline cooker is discreet in concept: an electrical spark is generated at the electrode, and that spark ignites the gasoline on the burner. When it fails, the causes are normally

mechanical and electrical, now not mysterious.

Burner elements: the so much not noted culprit

After cleansing, persons sometimes placed burner parts again "close ample". On many cookers, the burner cap wishes to align exactly with gasoline pathways and ignition factors. If that is tilted, sitting on grime, or equipped after soaking with detergent residue, the spark would still take place, however the ignition sequence will now not persistently create a flame.

A hassle-free repair is to put off the burner cap and head, then refreshing them effectively. Ports may well be blocked by carbon residue, tough water deposits, or grease. It is precious not to enlarge jets or wreck any precision areas. Gentle cleansing and ensuring all holes are open is the exact technique.

I at times see household makes an attempt to poke the ports with improvised metal gear. That can scratch or distort, after which the flame ameliorations to come back. For obdurate blockage, a legitimate will use right equipment and tactics tailored to the burner design.

Electrode situation and cleanliness

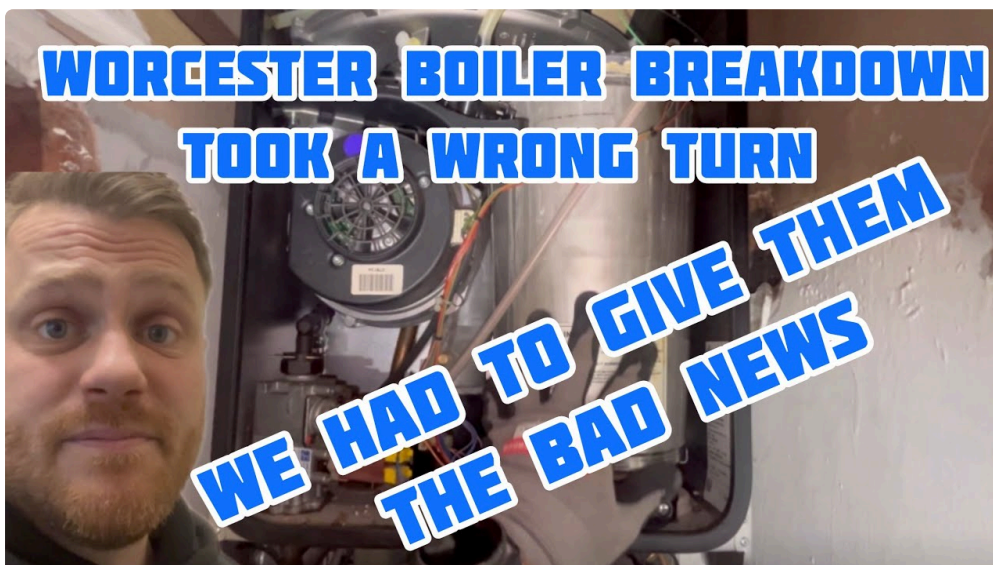
Electrodes may also be fouled by using grease vapours and cooking residues. If the electrode tip is covered, the spark can monitor throughout the coating instead of jumping to the burner house. You would possibly still get audible clicking, but ignition can be unreliable.

If you may have currently wiped clean the cooker, it is usually viable that cleanser or water remained on the electrode. Dried cleaning residue might possibly be exceedingly conductive.

If an electrode has moved just a little, it's possible you'll word that the spark jumps too a ways from where the gas reaches. In that case, the restoration isn't "extra cleaning", it's far top electrode adjustment or alternative. That is work for a technician, since you would like to keep altering the gasoline ignition geometry in a manner that motives misfires.

Power provide and the ignition module

If your cooker has electronic ignition it truly is powered, it is easy to have faults beyond the burners. Some cookers use batteries for ignition, others rely on mains grant. If the spark is at all times weak across all burners, it may level to a delivery difficulty. If in simple terms one burner misfires, it can be more repeatedly burner alignment or electrode fouling.



I do not favor to overstep into mains wiring counsel, however the precept is easy: ignition failures have an electrical reason commonly, and also you may still not retailer clicking eternally if the formula feels "wrong". Frequent misfires also can flood the burner edge with gasoline in the past ignition happens, which will increase the hazard if a specific thing else triggers ignition rapidly.

What a legitimate will inspect on ignition faults

A competent Gas Fire Service fashion mindset applies right here too, even for cookers. The tech will become aware of whether sparks are reaching definitely the right situation, no matter if the ignition circuit is providing the proper output, and whether or not any lead connections are compromised. If obligatory, they'll try gasoline circulate and test true burner performance throughout diverse settings.

This is likewise the level in which Gas Cooker Installation knowledge supports. Correct inlet positioning, fantastic regulator settings for LPG if acceptable, and greatest matching of burner portions all remember.

Flame troubleshooting: why the hearth looks wrong

Once ignition works, the next complaint is most likely "the flame is not top." People describe it in a different way, however the explanations are probably the identical.

Yellow or sooty flames

A yellow or sooty flame broadly speaking shows incomplete combustion. Common factors encompass insufficient number one air, blocked burner ports, mistaken burner cap seating, or unsuitable gas pressure for the burner.

On an LPG setup, it is just not distinct for disorders to appear after a cylinder change if the regulator is erroneous, mis-certain, or if the delivery isn't very handing over solid pass. LPG can even behave another way based on how the manner is established and ventilated.

A legitimate restore may encompass checking burner ports, verifying regulator efficiency for LPG, and confirming that air intakes and combining passages are clean. A "seems to be soiled" flame is not really simply beauty. Soot contained in the burner edge is a sign that combustion seriously is not clean.

Lifting, fluttering, or volatile flames

If the flame lifts faraway from the burner or flutters, the combustion mix will be off, or the burner may be partially obstructed. Sometimes you possibly can also see this while the burner head is not seated accurately, inflicting asymmetric gas distribution.

This is why superb reassembly is extra than comfort. It is component of how the equipment designs the flame.

Correct behavior on prime, improper on low

A burner that ignites proper yet struggles to remain lit on low can indicate a valve, a partially blocked orifice, or an predicament with the burner's ability to care for a solid pilot category flame. Many cookers do no longer have pilots, they ignite without delay, so "staying lit" relies at the flame setting up appropriately at the low placing.

If cleaning has now not helped, a technician can even want to inspect the valve assembly, assess for particles in the gas pathway, and confirm the burner head is sparkling and competently fitted. The

distinction among a small blockage and valve put on is whatever thing you handiest understand by inspection, not guesswork.

Gas leaks: what to do and what no longer to do

Let's be transparent. If you believe you studied a leak, you do no longer wait until eventually the following weekend. You isolate, ventilate, and get it checked. Gas leaks will not be a "wait and see" condition.

Signs you have to no longer ignore

Smell is the most important caution. Some worker's also observe a hissing while the knob is grew to become. Others see ignition troubles that look inconsistent, as if gas is escaping and no longer accomplishing the burner desirable.

If you see burner flames behaving strangely and smell gasoline on the same time, deal with it as a leak.

Safe isolation and what a reputable uses

A reliable frame of mind uses magnificent leak detection methods, most excellent stress and stream exams, and a exact examine of joints and connections. On cookers, the likely leak issues can contain flexible hoses, seals, connectors, and inner pipe joints if the equipment has been moved or disassembled.

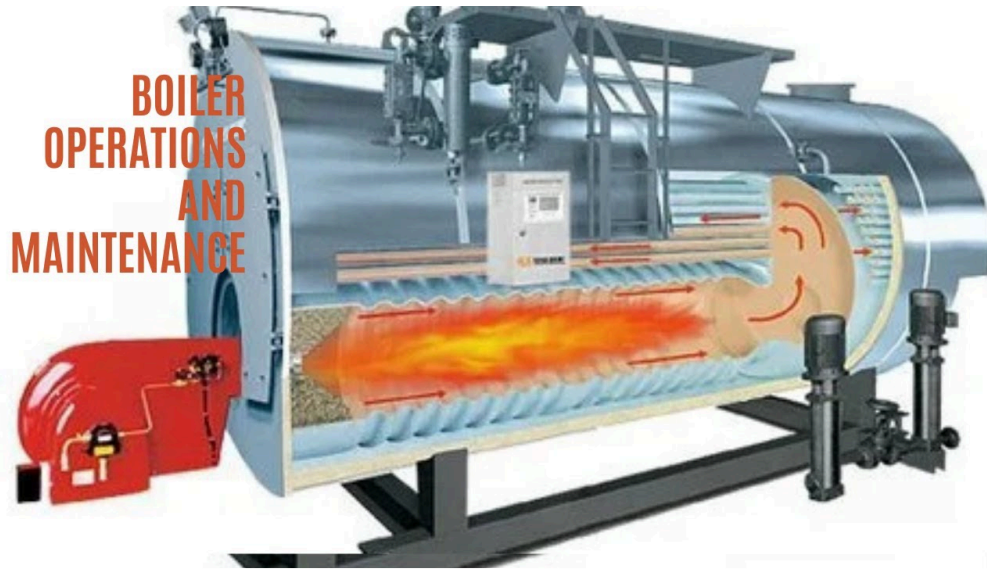
If the cooker is connected by way of a flexible connector, that's really worth remembering that repeated flexing and stress all through cleaning can hurt the suitable. Many house owners pull the cooker a bit of forward to refreshing behind it, then neglect to examine how the hose and seals respond.

Technicians may also guarantee that any substitute areas are like minded, and that the machine is checked after reassembly.

When to call for a Gas Safety Check, even in case you "imagine it's minor"

There is a temptation to address ignition and flame considerations as separate difficulties. Often you'll do minor cleansing and fix matters. But when you've got any hint of leaks, if a flame difficulty returns effortlessly after cleaning, or if you cannot restore commonly used operation throughout settings, it is time to call.

Also call once you will not establish what fuel form your cooker is arrange for. LPG and natural and organic fuel usually are not interchangeable without true conversion steps, fabulous burner injectors, ultimate regulator configuration, and fabulous labeling. A improper setup can create poor combustion and risky flames.



A Gas defense certificates should be would be could very well be asked by way of landlords, or by owners after installing or restoration, and a acceptable engineer will file what changed into checked and what used to be came upon. Even whilst certification isn't always required, the checklist is central, as it captures readings and exams that future engineers can use.

A be aware approximately LPG, regulators, and "it become satisfactory ultimate month"

I once attended a cooker the place every burner had a susceptible flame and the ignition struggled. The house owner had swapped the LPG cylinder the day beforehand. They wiped clean burners absolutely, and it changed not anything. The proper offender was within the supply facet, no longer the burners. The regulator output become inconsistent, and the cooker couldn't protect a ideal fuel-air mixture at every single float call for.

That is a lesson value retaining to your head: whilst the entire cooker's habit adjustments after a cylinder switch, shift your thinking in the direction of LPG deliver and regulator functionality, now not just clogged ports.



A technician doing Boiler Repair vogue diagnostics frame of mind for fuel home equipment will also test that ventilation and installing stipulations are still suitable. For a few setups, adjustments within the kitchen

surroundings can lower ventilation, and which can aggravate combustion.

What "top repair" pretty much appears like

People ordinarily think of repairs as swapping one aspect and moving on. Real upkeep are a cycle: diagnose, smooth the place gorgeous, examine to come back, then restoration or substitute if quintessential. The most effective Gas Cooker Installation and Boiler Repair engineers percentage this methodical procedure considering the fact that gasoline appliances behave predictably whilst supplied successfully and maintained proper.

On ignition faults, meaning checking electrode situation and location, confirming excellent burner reassembly, testing ignition output wherein riskless, and verifying excellent gas delivery to the burner.

On flame faults, which means checking burner ports, verifying right kind burner cap seating, checking for soot and partial blockage, and confirming gas pressures or regulator output wherein suited, primarily on LPG.

On leak faults, that suggests isolating, detecting, repairing, and retesting. It isn't really non-obligatory.

Related relatives tactics that matter greater than other people expect

A cooker does now not exist in isolation. Gas appliances percentage infrastructure, and the related domestic protection behavior influence results.

Plumbing and local gas connections

If you may have had up to date Plumbing paintings, installations, or variations to pipe runs, it could have an impact on local connections. Even vibrations all over paintings can shift fittings. If the cooker by surprise behaves differently after plumbers have been round, it's far valued at bringing up that during the decision.

Aircon and air flow changes

You might be stunned how ordinarily ventilation assumptions get challenged by means of new home equipment. An Aircon unit, or an extractor device used greater intensely, can difference airflow patterns in a room. If combustion air delivery is decreased or displaced, flames can look unsuitable. Air Conditioning seriously is not straight away component to gasoline grant, yet airflow is portion of the bigger combustion picture.

Burger van fuel and different excessive-use environments

High-use setups, like a Burger van gasoline service environment, also switch how quickly residues building up and the way basically add-ons want interest. Commercial use will increase grease and soot deposits. It additionally increases the danger that fittings are knocked even though tools is moved. If you run a takeaway or mobile catering, your gasoline cooker servicing time table have to mirror that certainty.

Preventing repeat callouts: preservation that truly helps

Most cooker disorders repeat due to the fact the common trigger repeats. If the burner constituents are not dried desirable, ignition troubles will return. If a distinctive port maintains clogging, the consumer might be cleansing with no moving into the small passages wherein residue settles.

The most popular prevention is dull: blank burner heads correctly, dry them utterly, refit them adequately, and ward off competitive probing of jets or ports.

For homeowners who use the cooker daily, a periodic Gas security certificates check is a good self-discipline. Even when all the things seems excellent, it catches small considerations ahead of they turn out to be flame instability or ignition disasters.

Trade-offs to take note while something feels "essentially fixed"

Sometimes a cooker will boost in short after cleaning after which become worse. That can appear whilst the basis result in just isn't soot, yet a worn aspect or a grant instability. For illustration, ignition may match for per week, then one burner misfires lower back in view that the electrode coating builds temporarily with residues, or on account that the burner cap now not sits perfectly.

Here is the judgment name I actually have made within the discipline: if cleansing restores performance and it stays stable for a reasonable era, which you could reasonably deal with it as renovation. If it assists in keeping slipping lower back, do now not preserve repeating the similar fixes. Call for proper inspection so that you can forestall chasing indicators.

The related logic applies to gas leaks. If the scent returns when you "waited it out" and the equipment seemed k earlier, that is just not reassurance, it's a signal the underlying difficulty became no longer top resolved.

A reasonable scenario: ignition failure on one hob

To make this more tangible, here is a true-international style walkthrough stylish at the styles technicians see.

A home owner experiences that one hob clicks but does no longer mild. The different burners paintings. They tried time and again, and now they say there may be a "moderate fuel smell" after repeated clicking.

A riskless response is to show off the fuel on the isolation valve, ventilate, and forestall attempting to ignite. Repeated makes an attempt can create greater gas within the burner zone. Then, with the cooker cool, they eliminate the burner cap and head. Often they discover a small amount of residue or a cap that has been geared up slightly off. Drying is very important, particularly if the materials have been washed not too long ago.

If cleaning and top seating repair it, superb. If the issue persists and enormously if there is any smell, it's once you strengthen to a technician. The technician can cost electrode condition, make certain relevant gasoline stream to that burner, and use correct leak detection if required.

That mind-set helps to keep things calm, trustworthy, and green.

Another situation: yellow flames on each burner

A family unit notices yellow flames on all burners, and they also spot soot on pans after quick cooking instances. They easy burner ports and it improves slightly, but after a couple of days the yellow returns.

When flame troubles influence assorted burners, I do now not concentration simply on one burner thing. The higher picture will become the furnish and combustion surroundings. For LPG mainly, regulator output and gas cylinder situations can impact overall performance. Air give and ventilation patterns additionally rely.

A actual Gas Safety Check during this state of affairs might comprise examining burner condition, confirming the best option meeting, and checking the gasoline source edge in a manner this is outstanding for the cooker type and fuel fashion.

Keeping your engineer's time valuable

When you name for guide, you're able to save time by way of giving clear data. Tell them which burners misbehave, what the flame feels like on prime and occasional, even if the ignition is sparking constantly, and whilst the fault commenced. If you are on LPG, mention cylinder variations or regulator problems. If everybody has moved the cooker for cleaning, mention that too.

If you've gotten just lately had Boiler Service or Boiler Installation paintings accomplished in the property, it is usually simple to claim so. Not as a result of the boiler straight away causes cooker considerations, however considering that fuel defense wisdom and pipework adjustments customarily come about across the same time.

The more desirable your observations, the speedier the diagnosis, and the less trial-and-blunders anyone has to bear.

Final memories on fixing ignition, flames, and leaks

The truthful reality with gas cooker maintenance is that many trouble are straightforward as soon as the accurate class is pointed out. Ignition disasters basically come right down to cleanliness, best suited burner match, electrode condition, or electric supply. Flame problems customarily come all the way down to combustion mix, blocked ports, fallacious fuel setup, or give steadiness, extraordinarily for LPG. Leaks are varied, given that they require suited detection and checking out rather than staying power or wish.

If you ever suspect a leak, quit troubleshooting and treat it as a protection count. If you are going through continual flame issues or habitual ignition faults after cleansing, this is really worth buying a cautious inspection instead of repeating the similar repairs steps.

A wonderful Gas security certificate inspection, a relevant Gas Fire Service form diagnostic frame of mind, and the perfect Gas Cooker Installation or Boiler Repair manner all percentage one component: they respect the chemistry of combustion and the realities of offer [Aircon Essex](#) and air flow. That is the difference among a cooker that works reliably and one that retains gambling up if you happen to are busy.